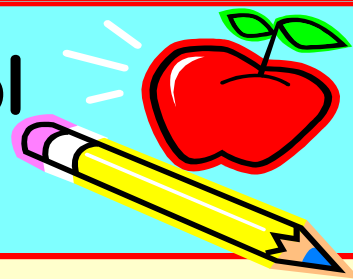


The Brook School and Nursery



Tel: - 01293 886521

HI ALL,

Where has this term gone!!!!

CHRISTMAS FAIR

A HUGE thank you to everyone who donated, supported and helped at our Christmas fair, especially all three PTA's. It was so busy and hopefully we have raised lots of money to support our schools.

LIGHTING OF THE CHRISTMAS TREE



We will be holding our annual Lighting of the Christmas Tree on Tuesday 4th December at 6.00pm until 6.45pm. We will be selling refreshments including mulled wine and flashing toys. Some of our Year 2 children will be reading poems and we have some Christmas songs for you all to join in with so please do come and join us. It really is a very special evening. Wrap up warm though!

CHRISTMAS PLAY

- We still have tickets available for our dress rehearsal. It is a good chance to invite other members of the family. Please see the office to pick up extra tickets.
- Little ones can only come to our dress rehearsal on Thursday.
- We are short of creche helpers on Friday 7th and Wednesday 12th. If you can help please let the office know urgently otherwise we will not be able to run a creche on those days and parents will have to find alternative arrangements. We will send a text out on Wednesday 5th if we are cancelling those creche sessions.
- Please remember that you must book a creche place. Any little ones not booked in will not be allowed in the performance, so please make alternative arrangements.
- If you have swapped your tickets but have a reserved seat (Friends, Governors & regular Parent helpers), please let us know otherwise there will be no reserved seating available for you on your new date.

CHRISTMAS LUNCH

We will be having our Christmas lunch on Friday 14th December.



You do not need to order this - we have ordered enough for every child.

PARTY DAY

We will be having party day on Tuesday 18th December. The children have party food instead of a hot lunch **so there is no hot school dinners ordered at all for this day.** Party food lists will go up outside the classrooms and in BFC/ASC on Wednesday 5th December. Children can wear party clothes all day and they get a visit from the man in red!

PANTO - 13TH DECEMBER

It is getting nearer! A letter will come home at the end of the week with all reminders ready for our trip.

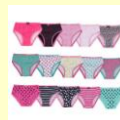


CHRISTMAS JUMPER DAY

We will be celebrating Christmas jumper day on Friday 14th December where your child can wear their own Christmassy clothes. We do ask for a small donation on this day which we will be donating to the Maidenbower Park fund.

SPARE CLOTHING

We have run out of most items of spare clothing at the moment especially tights, socks, boys polo tops, skirts and pants/knickers. If you have borrowed some of ours please could you return them and if you do have any spares you could donate, please hand them to the office. Thank you.



OPEN AFTERNOON

We will be having our termly open afternoon on Monday 10th December from 3.00pm to 4.00pm. This is a chance to come and look at your child's work, see their classroom and have a look around the school. We do ask that you fill in a small evaluation regarding how your child is getting on. We look forward to seeing you.

There's more on the back.....

CHRISTMAS PLAY DVD ORDER FORMS

Please can all DVD order forms for our amazing production of 'Tinsel and Tea Towels' please be in by Friday 14th December.

Thank you.

**LOVE IN A BOX**

Please can all donated 'Love in a Box' boxes be returned to school by Friday 14th December as we will be dropping them off in Crawley. This is such a lovely idea and we hope lots of people will volunteer to make them.

SWEETS FOR SANTA

Any donations of sweets for Santa's trip around Maidenbower need to be in by Wednesday 12th December. Thank you.

EARLY FINISH

Please remember that we will be finishing at 1pm on Wednesday 19th December. Please make sure you can come and pick your child up at that time or make other arrangements. There will be no After School Club on that day.

REMINDERS:

- Celebration assembly will be at 2.20pm this Friday.
- School and Nursery starts back on Thursday 3rd January.

FRIENDS OF THE BROOK

The Friends are always pleased to hear from you with suggestions for money raising events or offers of help, so please get in touch with them pta@brook.w-sussex.sch.uk or put a note in the Friends red post box in the office reception area.

**CHILDREN IN NEED**

We raised a whopping £303.67 for Children in Need this year. A really massive well done and thank you to all of you for your kind donations.

DIARY DATES

- 04.12.18** - Lighting of the Christmas tree at 6.00pm
06.12.18 - Dress rehearsal
07.12.18 - Christmas play am - Y2 & Nursery parents
07.12.18 - Celebration assembly at 2.20pm
10.12.18 - Christmas play am - Reception parents
10.12.18 - OPEN afternoon - 3.00 to 4.00pm
11.12.18 - Christmas play am - Y1 parents
12.12.18 - Christmas play pm - Y2 & Nursery parents
13.12.18 - Christmas Panto trip
14.12.18 - Christmas lunch
18.12.18 - Party day
19.12.18 - Celebration assembly at 8.45 - all December Birthdays
19.12.18 - School & Nursery closes at 1.00pm
03.01.19 - SCHOOL & NURSERY STARTS
02.05.19 - Polling Day - Nursery & School closed

INSET DAYS 2018 - 2019

- Monday 3rd June 2019
 Monday 22nd July 2019
 Tuesday 23rd July 2019

Holidays

- Christmas break - Thursday 20th December 2018 to Wednesday 2nd January 2019 - school starts Thursday 3rd January
 Half term - Monday 18th February 2019 to Friday 22nd February 2019 - school starts Monday 25th February
 Easter break - Monday 8th April 2019 to Monday 22nd April 2019 - school starts Tuesday 23rd April
 Half term - Monday 27th May 2019 to Friday 31st May 2019 - school starts Tuesday 4th June
 Summer break - we break up on Friday 19th July at 1.00pm

**DID YOU KNOW**

Santa hasn't always dressed in red. Pre 1930s there were many different variations of Santa, sporting a variety of different coloured garments and ranging in size from big to small. Some people claim the modern day image of Santa Claus was created by Coca-Cola, but this isn't strictly true. The original red-suited Santa became popular in the US and Canada in the 19th century due to the influence of caricaturist and cartoonist Thomas Nast. Coca-Cola commissioned their depiction of Santa in 1931.

The Brook

NEWSLETTER FEEDBACK

Please feel free to write any comments about either the newsletter or other areas relating to school below. We really do value your feedback.

Child's Name: Class:.....

Signed..... Date.....